

## Study of rodent species endemic to South East Asian karsts



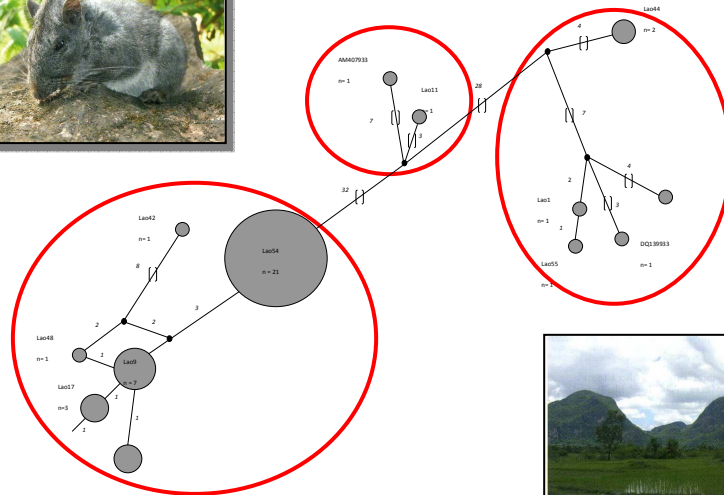
High rates of  
endemism

A large Asian  
distribution



*From Clement et al. 2006*

The case of *Laonastes aenigmamus*  
 Network analysis: Evidence of three highly divergent genetic lineages



Rivière et al. , 2011. *Journal of Mammalogy*, 92, 620-628

Existence of highly divergent genetic lineages at a very fine geographic scale. Would be managed as different Management units or Evolutionary Significant Units (ESU) ?



Rivière et al. , 2011. *Journal of Mammalogy*, 92, 620-628

# The case of *Leopoldamys neilli*

PhD thesis of Ms Alice Latinne, University of Liège



Threatened species, UICN red list



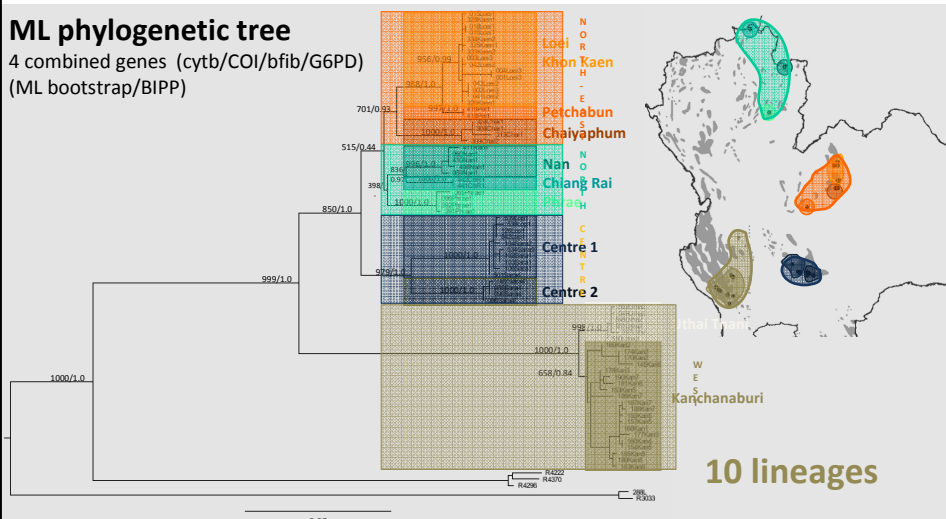
## 1. Geographical structure of the genetic diversity of *L. neilli*

Evidence of 4 main groups subdivided in 10 geographically well-structured lineages.

Latinne et al., 2011. Conservation Genetics, In Press

### ML phylogenetic tree

4 combined genes (cytb/COI/bfib/G6PD)  
(ML bootstrap/BIPP)



10 lineages